

WWW.FRANCESANNEVEILS.COM

HOW TO
CHOOSE
A VEIL
THAT
COMPLIMENTS
THE SHAPE OF
YOUR
FACE

FRANCES ANNE VEILS

Choosing a wedding veil that compliments your face shape can enhance your overall bridal look by balancing your features and adding a flattering touch.

Here's how to select the perfect veil based on face shape:

1. OVAL FACE SHAPE:

- **Key Features:** Balanced proportions with a softly rounded jawline.



- **Veil Style:** Most veil styles work beautifully with an oval face! Experiment with different lengths, embellishments, and shapes to suit your gown and personal style.
- **Pro Tip:** A mantilla or cathedral-length veil highlights the elegance of an oval face.



2. ROUND FACE SHAPE:

- **Key Features:** Full cheeks and a rounded jawline.

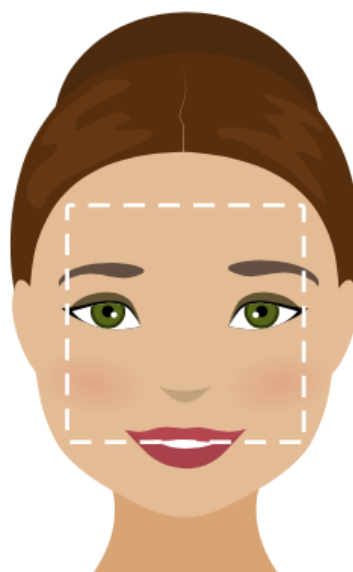


- **Veil Style:** Choose a veil that adds height and elongates the face, such as a fingertip or chapel-length veil. Veils with a cascading shape or vertical detailing are ideal.
- **Avoid:** Veils that cut across the widest part of your face, like shoulder-length veils, as they can emphasize roundness.



3. SQUARE FACE SHAPE:

- **Key Features:** A strong jawline and angular features.



- **Veil Style:** Opt for soft, flowing veils, such as waltz-length or elbow-length styles, to create a romantic look that softens angular lines. Circular or mantilla veils are especially flattering.
- **Avoid:** Veils with sharp edges or heavy embellishments near the face.



4. HEART/TRIANGLE FACE SHAPE:

- **Key Features:** A wider forehead and a narrow, pointed chin.



- **Veil Style:** Choose veils that add volume around the lower half of your face, like tiered or cascading veils, to balance your features. A blusher can also create a harmonious effect.
- **Avoid:** Veils that add width to the top of your head, which may make the forehead appear larger.

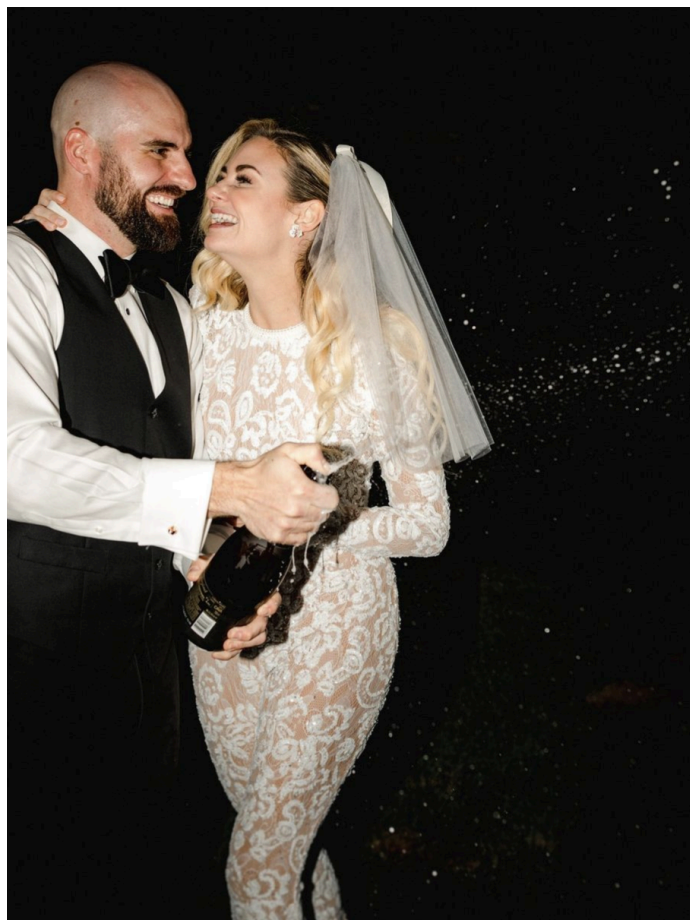


5. LONG (RECTANGULAR) FACE SHAPE

- **Key Features:** A longer face with balanced width.



- **Veil Style:** Select veils that add width and softness, such as shoulder-length, elbow-length, or mantilla veils with lace or detailed edges.
- **Avoid:** Veils that are very long or heavily vertical, as they can exaggerate the length of the face.



6. DIAMOND FACE SHAPE

- **Key Features:** Wide cheekbones with a narrow forehead and jawline.



- **Veil Style:** Veils that frame the face, such as mantillas or drop veils, work beautifully to highlight your cheekbones and soften the overall look.
- **Avoid:** Veils that are super short as they can compete with the natural shape of the face.



FINAL THOUGHTS FROM FRANCES ANNE...

What's the ONE veil style that looks good on
ANYONE?

It's the veil that when you put it on,
it makes you feel incredible!

**As one bride once said to me:
"I never thought a veil could make a person feel
so beautiful!"**

So... do THAT! Choose THAT veil!

